

# The Shaw Theatre



**Hire Pack**  
**2024**





# The Shaw Theatre

In the heart of Kings Cross, the 446-seat Shaw Theatre has played host to a wide range of drama, dance, musical theatre and concerts since its opening in 1971. It is a versatile space suited to all types of performance, and also a fantastic venue for photo shoots, filming, rehearsed readings, competitions, workshops and auditions. It is the perfect central location, with St Pancras and Eustons stations both less than five minutes walk away.

## Features

- 446 comfortable, spacious seats - including up to six wheelchairs spaces and ten access seats
- Large 9.5m x 12m stage with spacious wings
- 4 Dressing Rooms and Green Room, suitable for up to 60 performers (additional rooms available to hire)
- High Spec Lighting & Sound Equipment
- Accessible seating & facilities (Wheelchair access to stage, backstage dressing room, & audience)
- Loading bay directly onto stage

# The Auditorium







# The Shaw Theatre

We have two large front of house spaces, our foyer and mezzanine. Both are perfect for drinks receptions, meet and greets, book signings, and much more.

## Features

- Flexible spaces that you can brand/display in
- Fully stocked bar including alcohol and snacks
- Box Office with integrated ticketing system
- Large Cloakroom



# The Foyer



## Catering

Catering is provided by Pullman London St Pancras, with menus designed by our Executive Chef. We would be delighted to create a bespoke package for your event.

Options include:

- Tea, Coffee & Pastries
- Cocktails & Canapes
- Fork or Finger Buffets
- Backstage Dinners

# The Mezzanine



# The Shaw Theatre



# Backstage

## Features

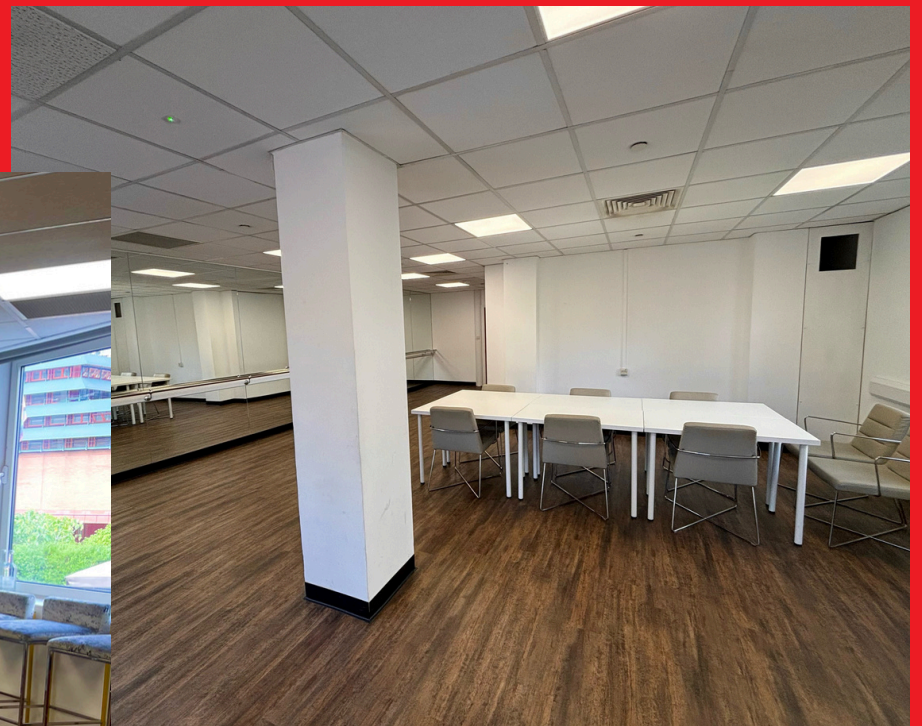
- Onstage Dressing Room & Toilet (Wheelchair Accessible)
- Three Additional Dressing rooms downstairs, fitted with dressing tables, mirrors and ensuite toilet & shower facilities
- Green Room with kitchen facilities

# The Studio

The My Fair Lady Rehearsal Space is a versatile studio perfect for auditions, production rehearsals, table reads, and workshops. It is the perfect central London studio for all needs, available for just £25\* an hour.

## Features

- 50m<sup>2</sup> Rehearsal space
- Air cooling system
- Lightweight furniture
- Mirrored wall with ballet bar
- Natural light with greyout blinds
- Free Wi-Fi



*\*Based on a weekday hire between 9.30am-6pm. Evening & weekend hires may incur additional costs - please enquire.*







# The Shaw Theatre

The Shaw theatre is located within the Pullman London Kings Cross, a 4\* hotel complex, with stunning meeting rooms, luxury bedrooms, and stylish restaurant, GA KingsX.



# The Restaurant

## Features

- A fun and vibrant restaurant for pre/post show drinks and meals
- Seasonal menu - Modern British dishes with an international twist
- Extensive drinks menu - from barista-made coffee to elaborate cocktails

# The Hotel



## Features

- 17 stylish meeting rooms *with direct access from the theatre to the Nobel Suite and Hyde Park Suites, available to hire for breakout spaces, additional dressing rooms, catering space, etc.*
- 312 modern bedrooms and suites *with discounted rate available for group bookings alongside your theatre hire*



# The Shaw Theatre



## Hire Us

For information on cost and availability,  
please email Theatre Manager Charlotte Wallis at [info@shaw-theatre.com](mailto:info@shaw-theatre.com).

**We would love to welcome you to The Shaw Theatre soon!**

[www.shaw-theatre.com](http://www.shaw-theatre.com)

0207 666 9037

The Shaw Theatre  
100-110 Euston Road  
London  
NW1 2AJ

